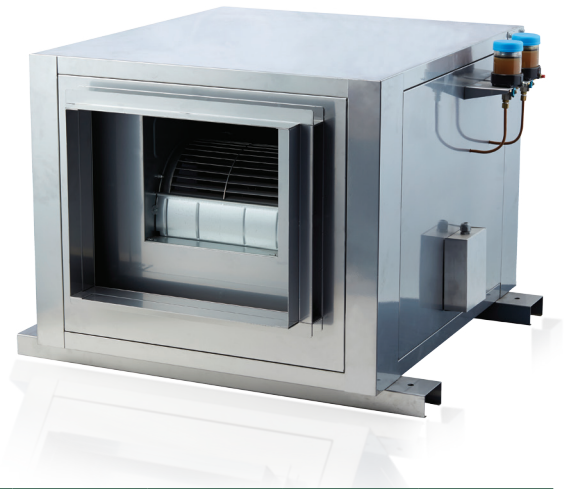


POWER VENTILATOR

Characteristics

- High air volume per unit area generated
- Wider range of usages with adoption of the fan using a pulley belt-driven application
- Repair and maintenance cost reduced with implementation of self-aligning bearings and automatic lubrication system
- Options available to select flange for intake and exhaust and damper
- Explosion-proof and totally enclosed high-efficiency motors installed in accordance with NEMA(National Electrical Manufacturers Association) requirements



Product data

Rotative speed		Static Pressure							
		98 Pa	10 mmAq	196 Pa	20 mmAq	294 Pa	30 mmAq	392 Pa	40 mmAq
RPM									
900	Air Volume	m ³ /min	47						
	MOTOR	HP kw	1 0.75						
1000	Air Volume	m ³ /min	55		8				
	MOTOR	HP kw	1 0.75		1 0.75				
1100	Air Volume	m ³ /min	63		37				
	MOTOR	HP kw	1 0.75		1 0.75				
1200	Air Volume	m ³ /min	72		57		7		
	MOTOR	HP kw	2 1.50		1 0.75		1 0.75		
1300	Air Volume	m ³ /min	78		68		27		
	MOTOR	HP kw	2 1.50		2 1.50		1 0.75		
1400	Air Volume	m ³ /min	86		76		56		9.5
	MOTOR	HP kw	3 2.2		2 1.5		2 1.5		1 0.75

• POWER VENTILATOR

