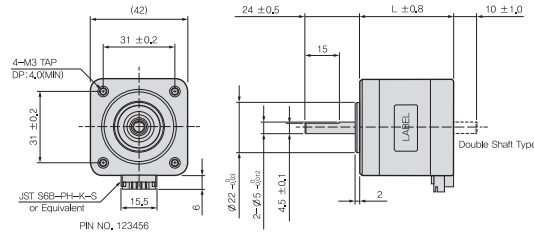


42Q

HYBRID STEPPING MOTOR
SERIES



Dimension Specification



Wiring Diagram



42Q UNI-POLAR SPECIFICATIONS

Model No. (Drive Sequence)	Step Angle (Deg.)	Rated Voltage (V/Phase)	Rated Current (A/Phase)	Winding Resistance (Ω/Phase)	Inductance (mH/Phase)	Holding Torque (kgf·cm)	Rotor Inertia (g·cm ²)	Motor Length (L=mm)
4S42Q-H09634S	1.8	9.6	0.4	24.0	15.0	2.2	38	34
4S42Q-H04334S	1.8	4.3	1.0	4.3	3.2	2.2	38	34
4S42Q-H03434S	1.8	3.4	1.2	2.8	1.9	2.2	38	34
4S42Q-H12040S	1.8	12.0	0.4	30.0	23.0	3.3	57	40
4S42Q-H07240S	1.8	7.2	0.6	12.0	11.5	3.3	57	40
4S42Q-H05940S	1.8	5.9	0.8	7.4	6.2	3.3	57	40
4S42Q-H04840S	1.8	4.8	1.0	4.8	4.2	3.3	57	40
4S42Q-H04140S	1.8	4.1	1.2	3.4	3.2	3.3	57	40
4S42Q-H04648S	1.8	4.6	1.2	3.8	3.8	4.0	81	48

OTHER SPECIFICATIONS AVAILABLE UPON REQUEST

42Q BI-POLAR SPECIFICATIONS

Model No. (Drive Sequence)	Step Angle (Deg.)	Rated Voltage (V/Phase)	Rated Current (A/Phase)	Winding Resistance (Ω/Phase)	Inductance (mH/Phase)	Holding Torque (kgf·cm)	Rotor Inertia (g·cm ²)	Motor Length (L=mm)
2S42Q-H07234S	1.8	7.2	0.6	12.0	15.0	3.0	38	34
2S42Q-H03134S	1.8	3.1	1.4	2.2	3.2	3.0	38	34
2S42Q-H02434S	1.8	2.4	1.7	1.4	1.9	3.0	38	34
2S42Q-H09040S	1.8	9.0	0.6	15.0	23.0	4.0	57	40
2S42Q-H04840S	1.8	4.8	0.8	6.0	11.5	4.0	57	40
2S42Q-H04140S	1.8	4.1	1.1	3.7	6.2	4.0	57	40
2S42Q-H03440S	1.8	3.4	1.4	2.4	4.2	4.0	57	40
2S42Q-H02940S	1.8	2.9	1.7	1.7	3.2	4.0	57	40
2S42Q-H03248S	1.8	3.2	1.7	1.9	3.8	5.0	81	48

OTHER SPECIFICATIONS AVAILABLE UPON REQUEST

- DRIVER CHOPPER
- SUPPLY VOLTAGE : DC 24,0V
- 2 PHASE EXCITING
- MOUNTING WITH RUBBER DAMPER

